

Electric Griddles-Thermostat Control

Model Numbers: CP-EG12, CP-EG12-H, CP-EG24, CP-EG24-H, CP-EG36, CP-EG36-H, CP-EG48, CP-EG48-H

Core Pro Cooking™ Countertop Collection

The Core Pro Cooking™ electric line can be adjusted to line up with even height for a great appearance in any cooking application. With robust construction, continuous output, and operator friendly controls, Core Pro equipment meets all commercial cooking demands!

Core Pro Cooking™ Electric Griddle - Thermostat Controls

Available in 12", 24", 36" & 48" widths, the 4000 Watt elements provide even heat to the 1" or 3/4" thick polished CR steel griddle plate. Adjustable thermostatic controls provide easy and safe operations and precise temperature control.



CP-EG12



CP-EG24-H



CP-EG36-H

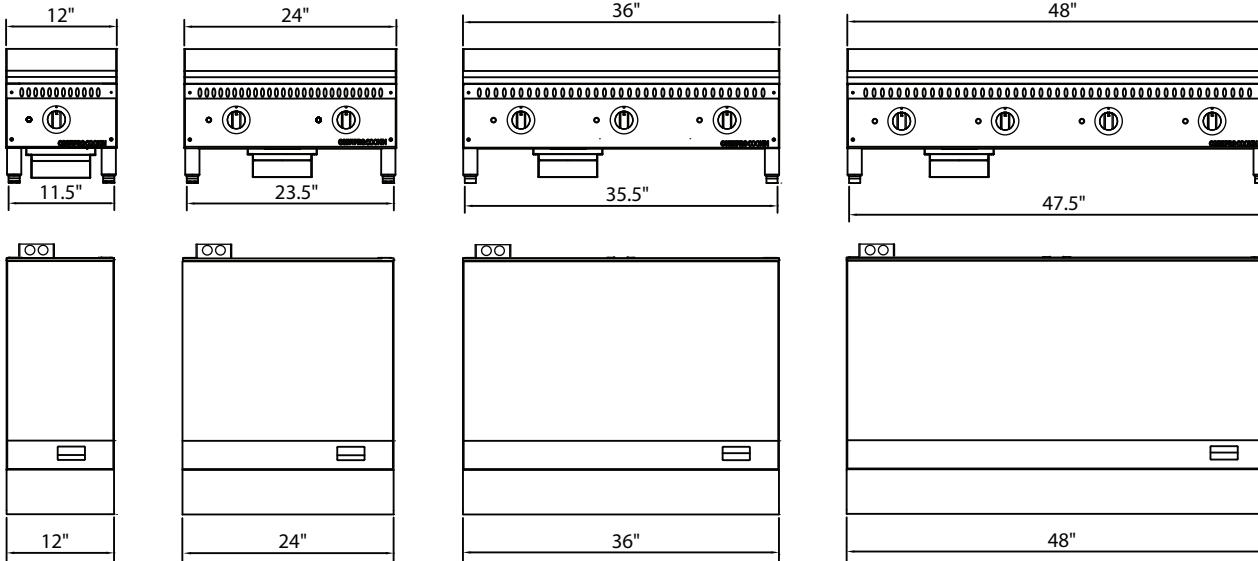


CP-EG48-H

PRODUCT SPECIFICATIONS

- Thermostat Controls for faster heat recovery
- 208 -240 Volt Single or 3 phase power requirement
- Temperature range of 150 to 450 degrees F
- 1" or 3/4" thick CR steel griddle plate depending on model (-H denotes 1" thick plate)
- 4000 Watt heating elements
- Temperature control knob every 12"
- All stainless steel cabinet
- Double wall insulated sides
- Widths: 12", 24", 36", & 48"
- "Cool-to-the-touch" front s/s edge
- Back and side splash guards fully welded to griddle plate
- Adjustable stainless steel legs, non-skid feet
- Easy to remove 3-1/4" grease drawer with "weep hole" and baffle
- Grease trough is standard 4" spatula width
- 1 year parts & labor warranty

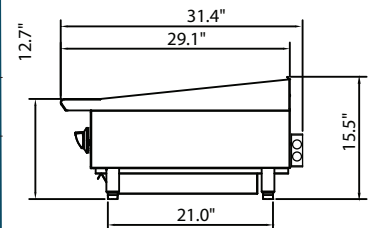
Electric Thermostat Griddles - Product Specifications



DIMENSIONS & SHIPPING INFORMATION

Please Note: These items are shipped on a pallet and are crated for protection during LTL shipment.

Model	Footprint	Overall Dimensions	Weight	Shipping Dimensions	Ship Wt.
CP-EG12	21.0"L x 11.5"W (53.4 cm x 29.2 cm)	34.4"L x 12"W x 15.5"H (87.3 cm x 30.5 cm x 39.4 cm)	119 lbs (54.0 kg)	36.2" L x 16.0"W x 19.3"H (92 cm x 41 cm x 49 cm)	146 lbs (66.0 kg)
CP-EG12-H	21.0"L x 11.5"W (53.4 cm x 29.2 cm)	34.4"L x 12"W x 15.5"H (87.3 cm x 30.5 cm x 39.4 cm)	132 lbs (60.0 kg)	36.2" L x 16.0"W x 19.3"H (92 cm x 41 cm x 49 cm)	159 lbs (72.0 kg)
CP-EG24	21.0"L x 23.5"W (53.4 cm x 58.7 cm)	34.4"L x 24"W x 15.5"H (87.3 cm x 61.0 cm x 39.4 cm)	200 lbs (91.0 kg)	36.2" L x 28.3"W x 19.3"H (92 cm x 72 cm x 49 cm)	245 lbs (111.0 kg)
CP-EG24-H	21.0"L x 23.5"W (53.4 cm x 58.7 cm)	34.4"L x 24"W x 15.5"H (87.3 cm x 61.0 cm x 39.4 cm)	227 lbs (103.0 kg)	36.2" L x 28.3"W x 19.3"H (92 cm x 72 cm x 49 cm)	271 lbs (123.0 kg)
CP-EG36	21.0"L x 35.5"W (53.4 cm x 90.2 cm)	34.4"L x 36"W x 15.5"H (87.3 cm x 91.4 cm x 39.4 cm)	293 lbs (133.0 kg)	36.2" L x 40.6"W x 19.3"H (92 cm x 103 cm x 49 cm)	345 lbs (157.0 kg)
CP-EG36-H	21.0"L x 35.5"W (53.4 cm x 90.2 cm)	34.4"L x 36"W x 15.5"H (87.3 cm x 91.4 cm x 39.4 cm)	334 lbs (152.0 kg)	36.2" L x 40.6"W x 19.3"H (92 cm x 103 cm x 49 cm)	387 lbs (176.0 kg)
CP-EG48	21.0"L x 47.5"W (53.4 cm x 120.6 cm)	34.4"L x 48"W x 15.5"H (87.3 cm x 122.0 cm x 39.4 cm)	378 lbs (172.0 kg)	36.2" L x 52.8"W x 19.3"H (92 cm x 134 cm x 49 cm)	447 lbs (203.0 kg)
CP-EG48-H	21.0"L x 47.5"W (53.4 cm x 120.6 cm)	34.4"L x 48"W x 15.5"H (87.3 cm x 122.0 cm x 39.4 cm)	433 lbs (197.0 kg)	36.2" L x 52.8"W x 19.3"H (92 cm x 134 cm x 49 cm)	501 lbs (228.0 kg)



SPECIFICATIONS

ELECTRICAL REQUIREMENTS:

- 208-240 Volts, 50-60 Hz, Single or 3 phase depending on model
- Each heating element supplies 4,000 watts at 240 Volts, 3,000 Watts at 208 Volts

Model	Cooking Area	Number of Heating Elements	Watts per Heating Element*	Total Watts*	Power Requirements (Amps) 208, 240 1 phase; 3 phase
CP-EG12, CP-EG12-H	20.5"D x 12"W	1	4,000	4,000	14.5, 16.7 Single Phase
CP-EG24, CP-EG24-H	20.5"D x 24"W	2	4,000	8,000	29.0, 33.3 Single Phase; 14 to 29 3 phase
CP-EG36, CP-EG36-H	20.5"D x 36"W	3	4,000	12,000	43.03, 50.0 Single Phase; 25 to 29 3 phase
CP-EG48, CP-EG48-H	20.5"D x 48"W	4	4,000	16,000	29.0, 33.0 Single Phase Dual; 38 to 44 3 phase

* at 240 Volts

Rev 2